



CORPORATE BROCHURE

INDEX

Infolks 3

Data Labeling 4

3D Point Cloud 7

Audio Services 8

NLP Services 8

ODC 9

Trusted By10

Commitments12

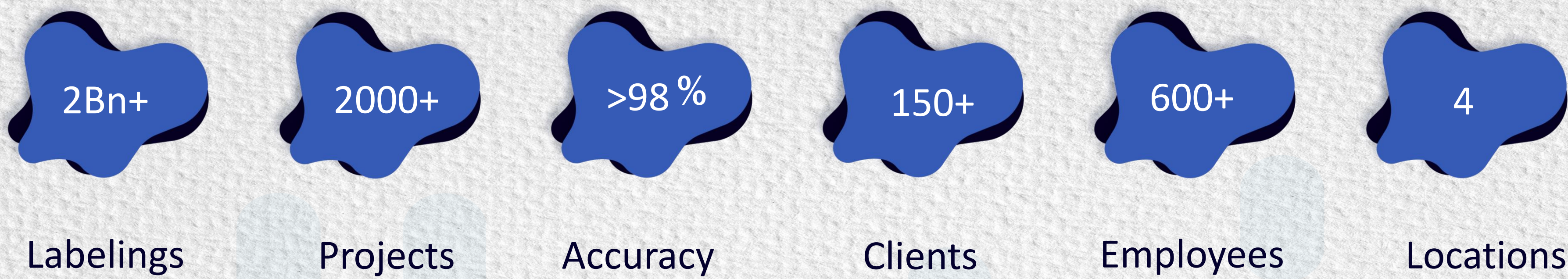




INFOLKS

We are a leading data labeling service provider. Our super-powered workforce labels precise and quality training data sets for AI/ML modules. We're here to bring someone's AI dreams into reality. Infolks, The ultimate data labeling partner!

OUR STATISTICS



CERTIFICATIONS

ISO 9001:2015
CERTIFIED

ISO 27001:2013
CERTIFIED

EU GDPR
COMPLIANT

HIPAA
COMPLIANT

DATA LABELING

Machine Learning (ML) is a fast developing cutting edge technology in the world and it require extremely large dataset to train a machine learning algorithm or model. We make this learning effective by making data smart through accurate data labeling services.



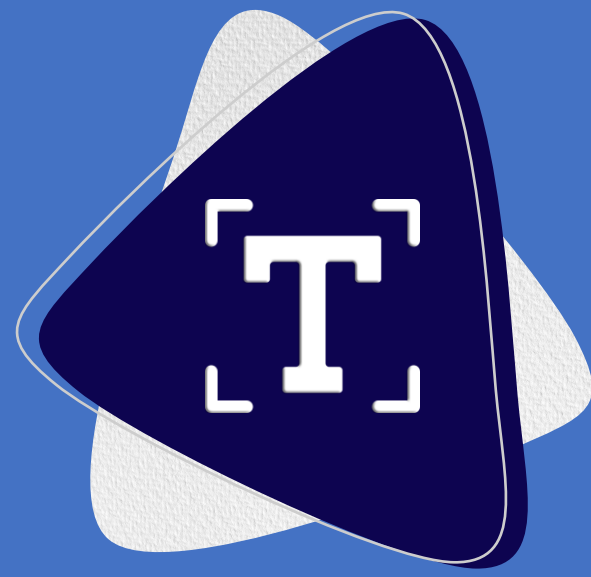
TYPES OF DATA LABELING



Image



Video



Text



Audio

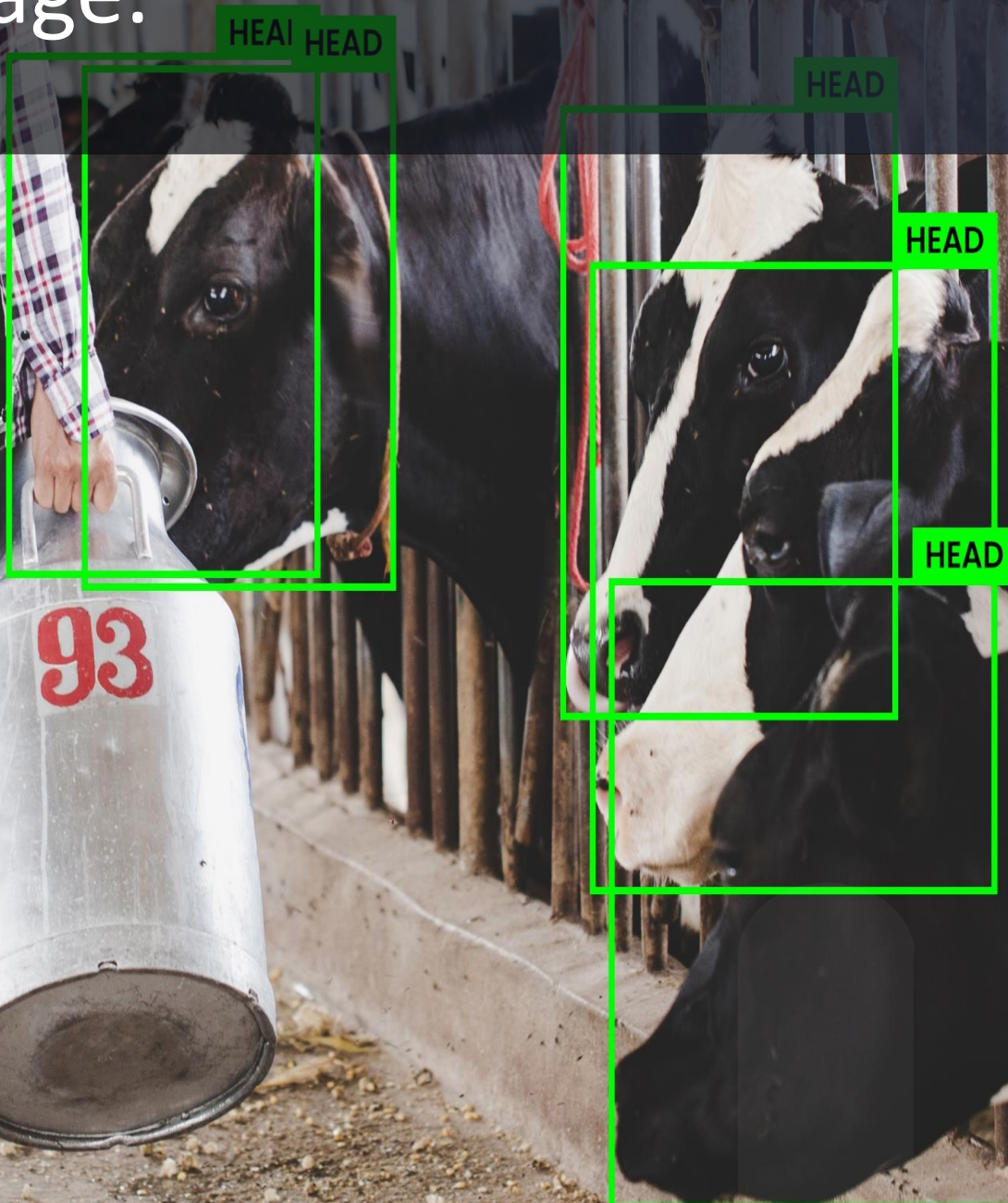


3D Point
Cloud

DATA LABELING TECHNIQUES

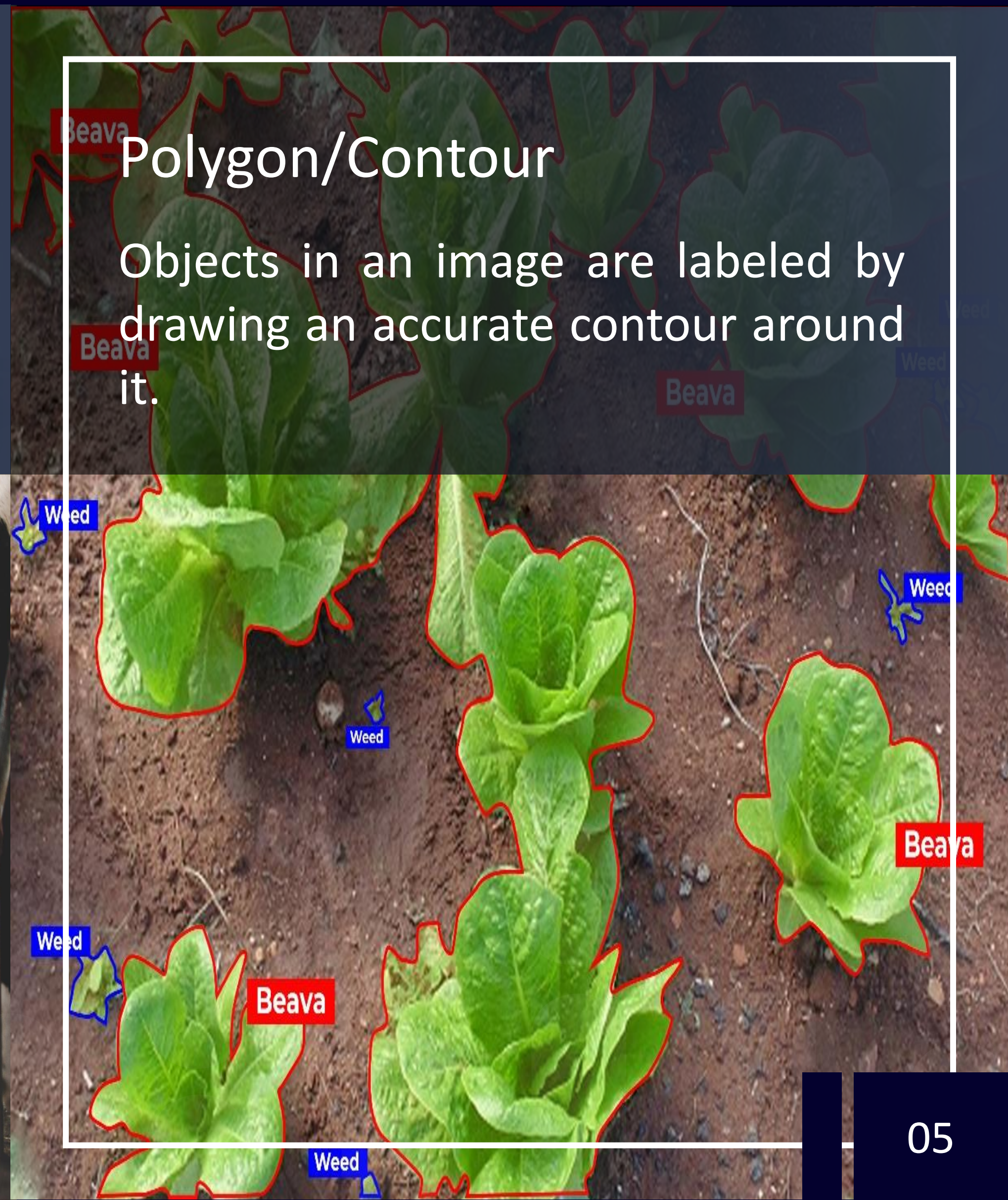
Bounding Box

A perfectly bounding 2D box is used to label the objects in a given 2D image.



Polygon/Contour

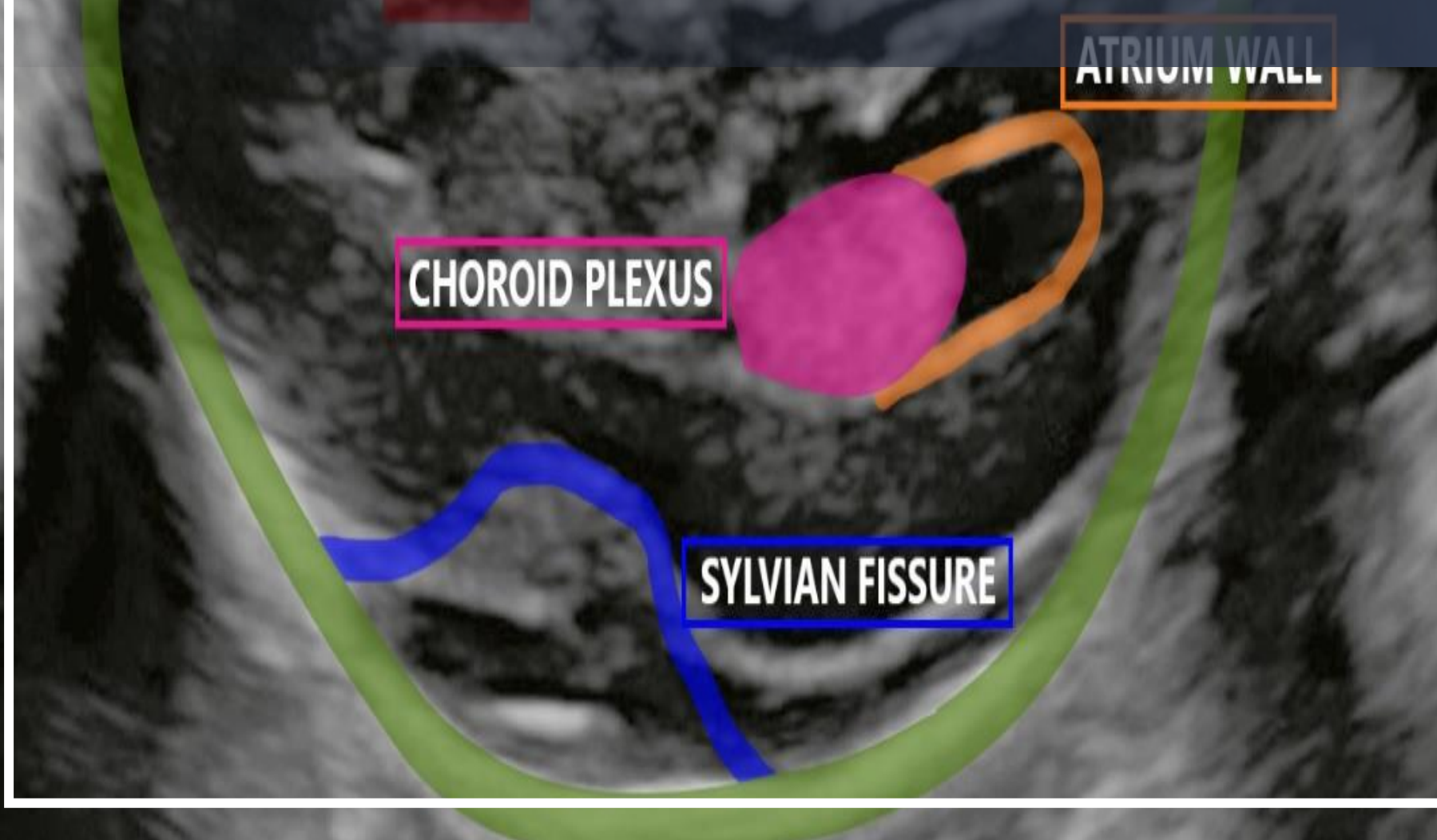
Objects in an image are labeled by drawing an accurate contour around it.



Semantic Segmentation

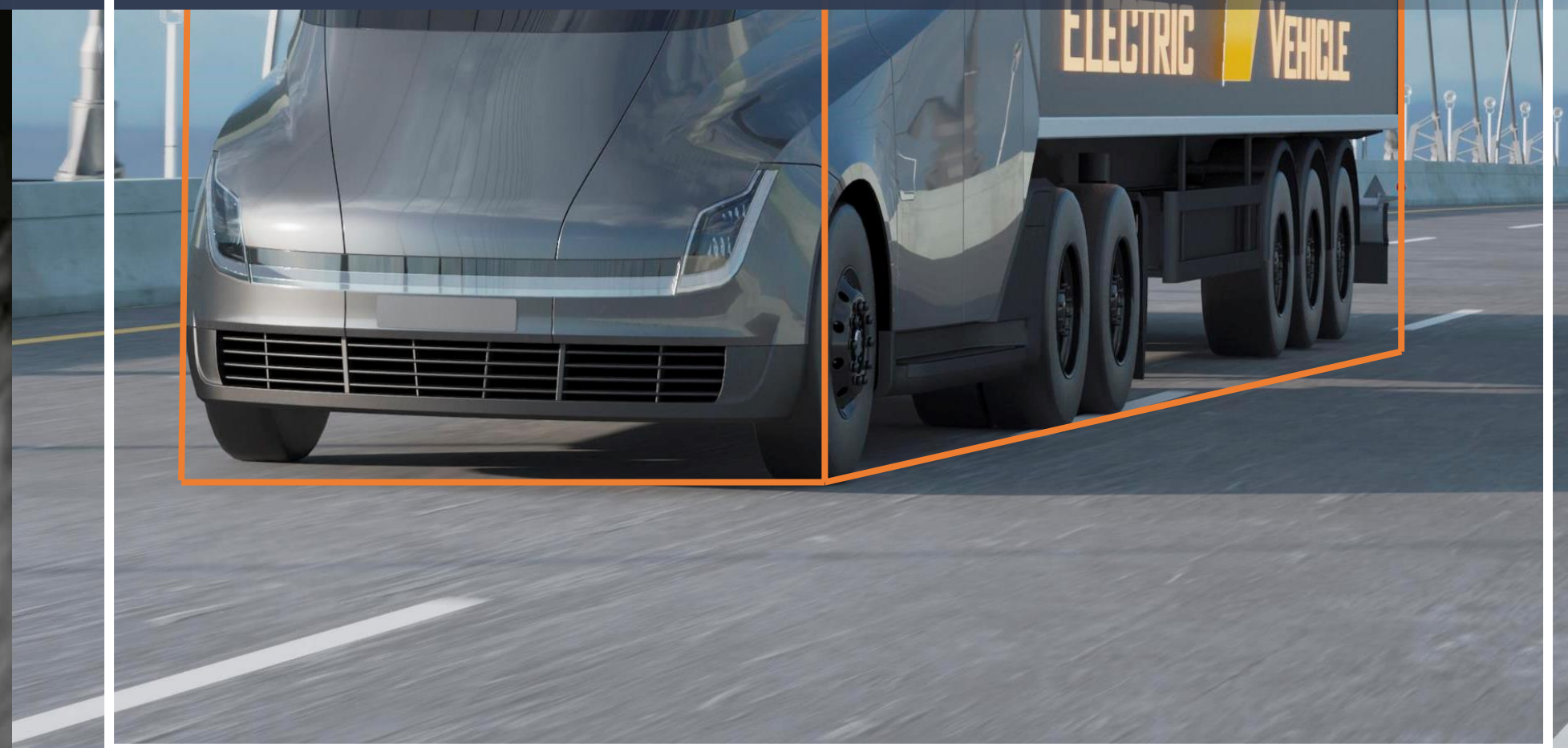
The image is segmented semantically at its pixel level. Based on the pixel labeling, semantic segmentation is of 2 types:

- Full pixel/Standard segmentation
- Instance segmentation.



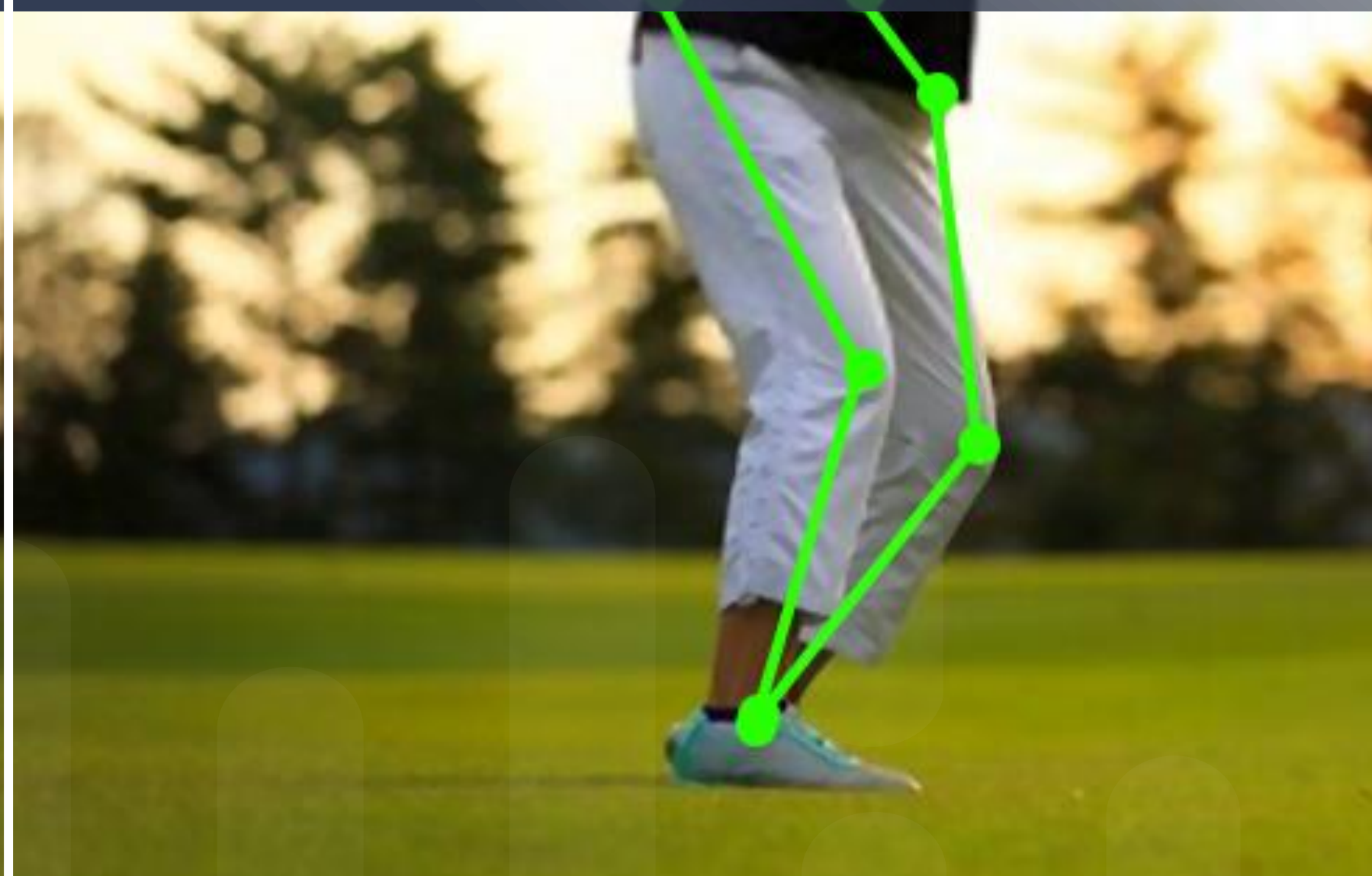
Cuboidal

Labeling of objects in an image using cuboids for processing 3D training data. This technique can be used in both 2D images and 3D point cloud data.



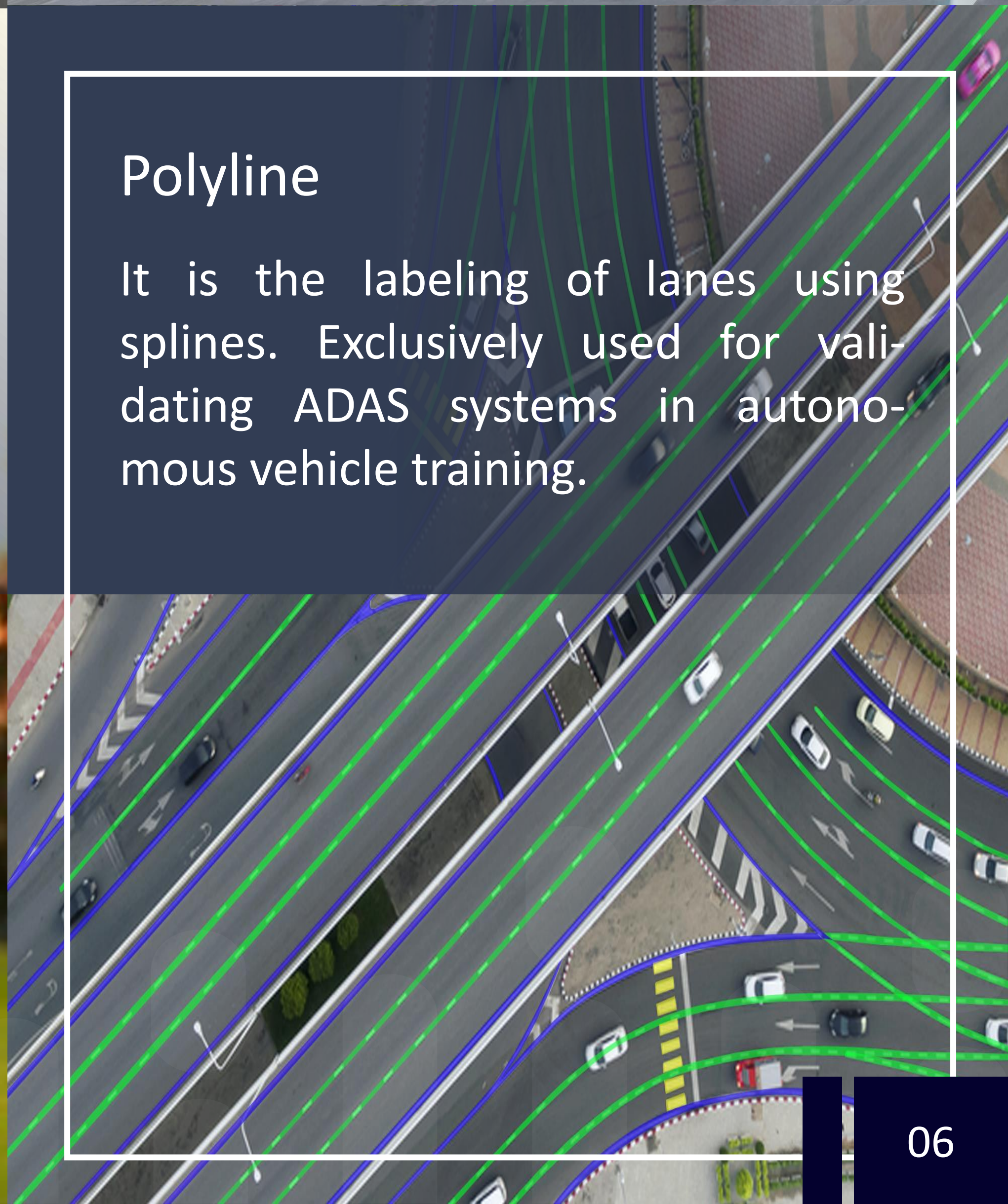
Keypoint

Objects in an image are labeled using points to determine the shape of it. Keypoint annotation are used to label facial/skeletal features, automotive parts etc.



Polyline

It is the labeling of lanes using splines. Exclusively used for validating ADAS systems in autonomous vehicle training.



DATA LABELING USE CASES



Healthcare



Automotive



Agriculture



Sports



Logistics



Retail



Rail



Aerial



Architecture



Livestock



Manufacturing



Food and
Beverages

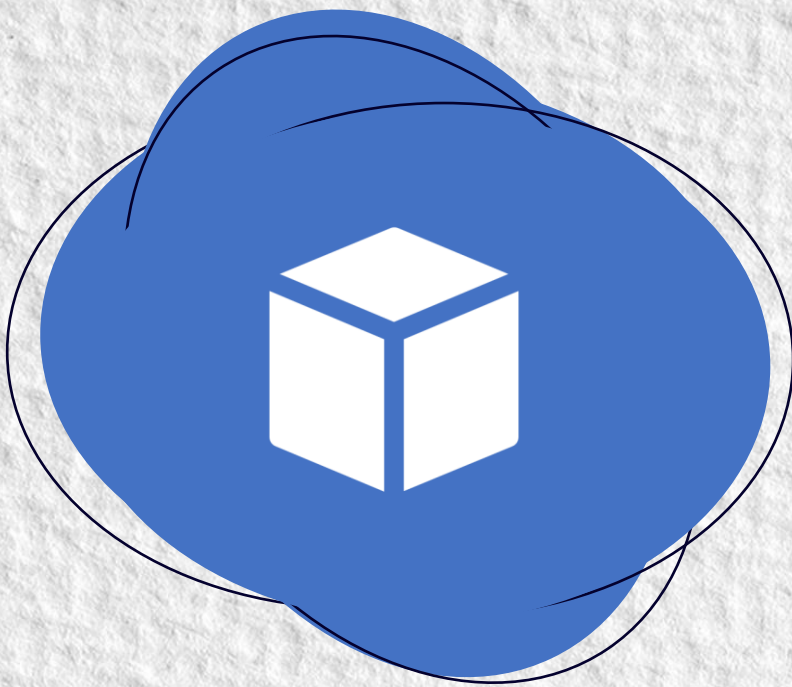


Defect
Detection

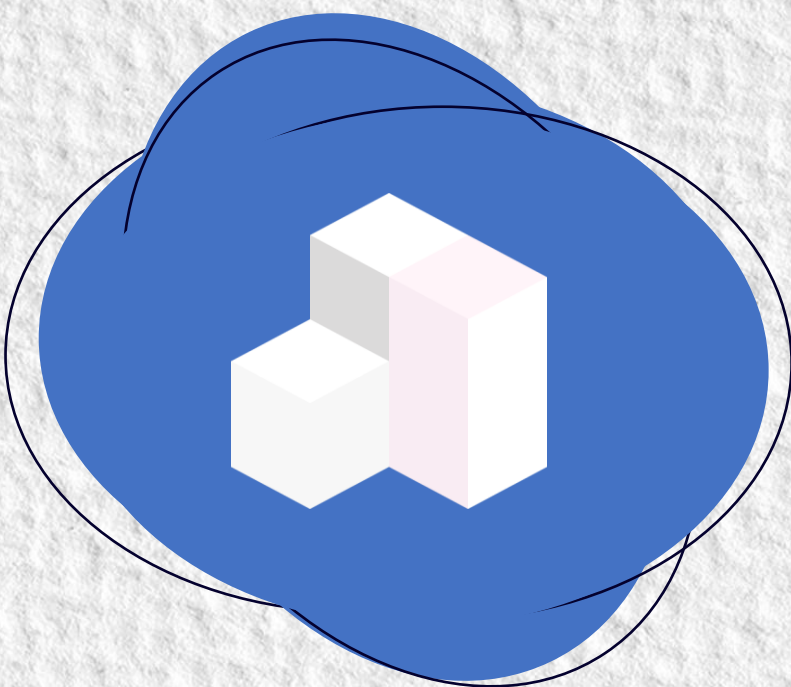


Human
Attribution

3D POINT CLOUD



3D Box Labeling



3D Segmentation

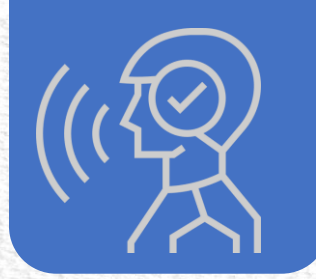


LiDAR Data Labeling

AUDIO SERVICES



Audio Transcription
Transforming any audiovisual file into its textual format.



Emotion Recognition
Identifying human gender and emotion from the voice clips.



Speaker Recognition
Identifying/ confirming speaker from his/her voice.



Audio Translation
Convert audio file from one language to another.

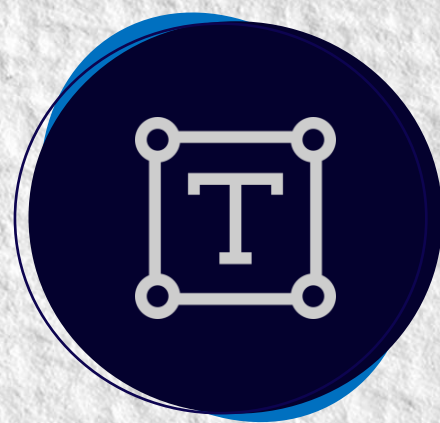


Audio Tagging
Classification of audio files based on its content.



Audio/Acoustic Fingerprinting
Differentiate a particular sound from other sounds.

NLP SERVICES



Text Tagging



Sentiment Analysis



Text Summerization



Mapping & Grouping



Handwritten Data Collection



Named Entity Extraction



Data Classification



POS Tagging



Machine Translation



Social Media Content Extraction

OFFSHORE DEVELOPMENT CENTER (ODC)

Our ODC facility is exclusively for foreign clients planning to set up an offshore team in India. We have previously established an ODC for a German-based automotive giant, Continental AG, for their autonomous project. This involved setting up a dedicated team of over 250 employees and a specialized workspace.

FEATURES

Dedicated team of experts

Access to the talent pool

Exclusive workspace with infrastructure

No additional charges than normal
hourly rate

Assistance in setting up all the measures and
policies

TRUSTED BY

Meet our happy clients.

Trusted by the world's best!

Continental

THAKRAL ONE


Fortune 10 & Fortune 100 Companies

SIEMENS

IWI

IPSO TEK

GIST
광주과학기술원
Gwangju Institute of Science and Technology



 THE UNIVERSITY OF AUCKLAND
NEW ZEALAND

ATEQ
Measurement Solutions,
Global Leader.

Scope Technology

ALPINE

 **stellapps**
Smart Systems, Stellar Applications.

 **Baraja**

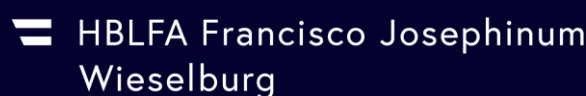
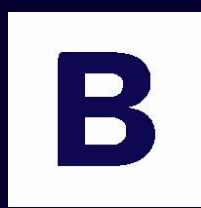
fka

 **shaip**

 **METOMOTION**

 **Jumbotail**

 **AWARE GROUP**



OUR COMMITMENTS TO CLIENTS

Infolks is committed to delivering the highest quality training datasets for AI/ML modules. To support and achieve this goal, the firm has implemented a triple-level quality checking policy that is systematically applied to all our projects.



Service Quality

- We are ISO 9001:2015 certified.
- The magic formula behind our success is "Quality Is Our Responsibility".
- We celebrate the first day of every month as "Quality Day".
- Ensure service quality through a Triple Level Quality Assurance System.



Data Security

- We are ISO 27001:2013 certified and follow EU GDPR standards.
- Every employee signs a legally valid NDA for ensuring secure handling of data.
- Workspace is equipped with 24/7 video surveillance & biometric entry-exit system.
- Strict restriction on the use of unauthorized electronic or storage devices on work premises.
- High-grade firewall systems for improved network security.
- Team of data security officials led by qualified lead for implementing best security measures in the environment.



Data Handling

- We deliver high quality service irrespective of the volume of data to be processed.
- Project data are stored in a secured system and internally transferred through highly secured LAN network.
- Considering post-project requirements, data will be retained for an additional 14 days after project submission. The data is then fully erased.



Free Demo

- We offer free pilot services at minimal risk until complete satisfaction.
- Free demo depends on the nature, requirements, and data volume.
- Our pilot services do not demand any paper works or advance payment.



Pricing And Payment

- Our pricing is comparatively lowest in the global market.
- We are flexible as per client's project requirements and data volume.
- There is no minimum data requirement.
- All other service assistance for data labeling services are enabled free of costs.
- We issue an invoice only after getting fully satisfied feedback from the client.
- If a client is dissatisfied with our services, we are willing to make up for it without any additional costs.



Dedicated Folks

- Our professional folks work with commitment and dedication.
- We provide experts with specialized skills as needed for particular projects.
- Team consists of Managers, Coordinators, Data Labelers, BD Executives, Data Security Officials, Software Developers, PR Executives, HR Executives, and Administrative Officials.



LabelMore

- LabelMore is our own multi-modality tool developed by our in-house technical team.
- Tool supports all formats of labeling output that clients prefer.
- Tool is compatible with all types of 2D image labeling techniques.



Service Assistance

- Provide all service support that client demands.
- Technical assistance, data management, and real-time customer support.
- Process data output according to client's project needs.
- Flexible team, ready to work on any tool provided by the client.
- Ready to work on any time zone preferred by the client.
- Provide/setup server spaces according to project requirements.
- Real-time monitoring facility if the client demands.



24/7 Availability

- We are available for work at any time.
- Our team is working around the clock, day and night.
- We have scheduled work hours in different shifts to facilitate this.



Flexibility

- No fixed rules are to be followed while entrusting project with us.
- From project onboarding to final submission our services are completely flexible to your constraints.
- Our service flexibility and workforce willingness enable us to promise time promptness.

**DRIVEN WITH A CLEAR VISION,
WE STAY FOCUSED MORE ON OUR
FUTURE AND GOALS.**



info@infolks.in



+91 70258 89911



Infolks Pvt.Ltd., Mannarkkad,
Kerala, India, 678583

